

Busch Product Overview



Oil-Lubricated Rotary Vane Vacuum Pumps

> R 5

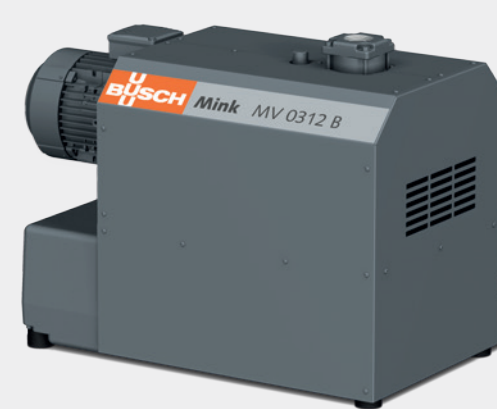
Ultimate pressure: 0.05 – 20 hPa (mbar)
Nominal pumping speed 50 Hz: 3 – 1,600 m³/h
Nominal pumping speed 60 Hz: 4.8 – 1,800 m³/h



Dry Claw Vacuum Pumps and Compressors

> Mink

Ultimate pressure: 20 – 200 hPa (mbar)
Overpressure: 2 bar(g)
Nominal pumping speed 50 Hz: 40 – 950 m³/h
Nominal pumping speed 60 Hz: 40 – 1,150 m³/h



Dry Screw Vacuum Pumps

> COBRA Industry

Ultimate pressure: 0.01 – 1 hPa (mbar)
Nominal pumping speed 50 Hz: 110 – 2,000 m³/h
Nominal pumping speed 60 Hz: 130 – 2,500 m³/h



Dry Screw Vacuum Pumps

> COBRA Semicon

Ultimate pressure: 0.001 – 0.03 hPa (mbar)
Nominal pumping speed 50 Hz: 70 – 7,385 m³/h
Nominal pumping speed 60 Hz: 85 – 7,385 m³/h



Vacuum Boosters

> Panda/Puma

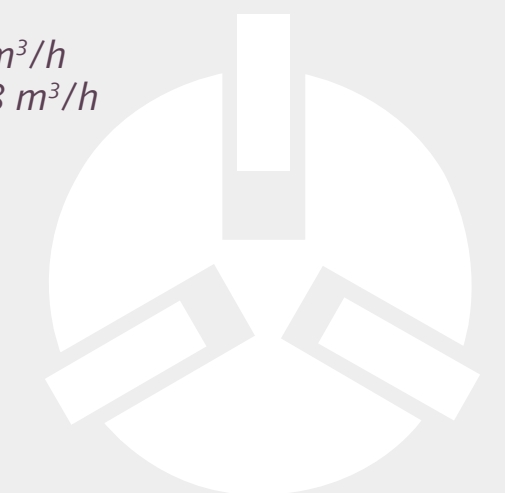
Pressure differential: Δp max. 100 hPa (mbar)
Nominal pumping speed 50 Hz: 250 – 9,535 m³/h
Nominal pumping speed 60 Hz: 280 – 11,600 m³/h



Dry-Running Rotary Vane Vacuum Pumps and Compressors

> Seco

Ultimate pressure: 100 – 150 hPa (mbar)
Overpressure: 0.6 – 1.5 bar(g)
Nominal pumping speed 50 Hz: 3 – 140 m³/h
Nominal pumping speed 60 Hz: 3.6 – 168 m³/h



Rotary Lobe Blowers

> Tyr

Pressure differential: Δp max.
Vacuum: -500 hPa (mbar)
Overpressure: +1,000 hPa (mbar)
Volume flow: 150 – 4,380 m³/h



Once-Through Oil-Lubricated Rotary Vane Vacuum Pumps

> Huckepack

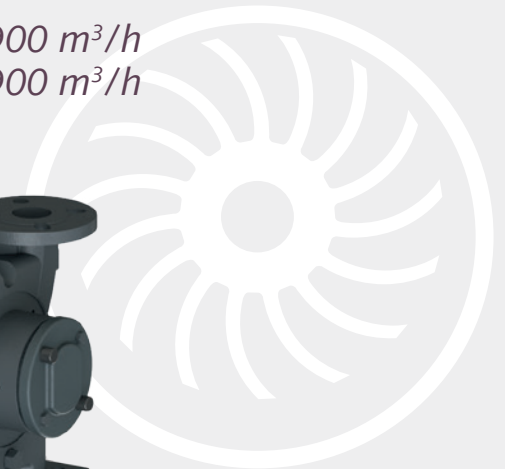
Ultimate pressure: 0.5 hPa (mbar)
Nominal pumping speed 50 Hz: 160 – 630 m³/h
Nominal pumping speed 60 Hz: 190 – 760 m³/h



Liquid Ring Vacuum Pumps and Compressors

> Dolphin

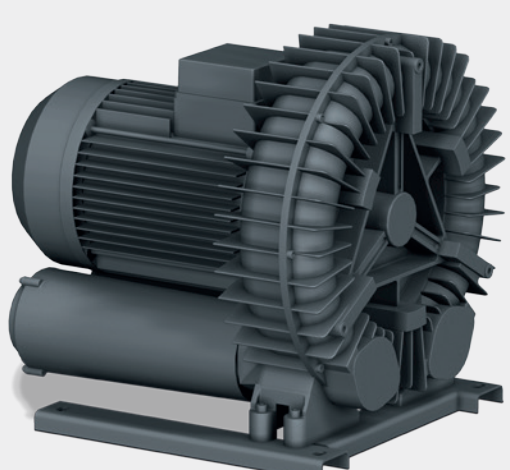
Ultimate pressure: 33 – 130 hPa (mbar)
Overpressure: 2 bar(g)
Nominal pumping speed 50 Hz: 25 – 10,900 m³/h
Nominal pumping speed 60 Hz: 31 – 10,900 m³/h



Side Channel Blowers

> Samos

Pressure differential: Δp max.
Vacuum: -500 hPa (mbar)
Overpressure: +600 hPa (mbar)
Volume flow: 40 – 2,640 m³/h



Two-Stage Oil-Lubricated Rotary Vane Vacuum Pumps

> Zebra

Ultimate pressure: $6.7 \cdot 10^{-3}$ hPa (mbar)
Nominal pumping speed 50 Hz: 2.9 – 90 m³/h
Nominal pumping speed 60 Hz: 3.5 – 108 m³/h



Scroll Vacuum Pumps

> Fossa

Ultimate pressure: 0.01 – 0.025 hPa (mbar)
Nominal pumping speed 50 Hz: 15 – 35 m³/h
Nominal pumping speed 60 Hz: 18 – 42 m³/h



Turbomolecular Vacuum Pumps

> Turbo

Ultimate pressure: $< 1 \cdot 10^{-10}$ – $1 \cdot 10^{-8}$ hPa (mbar)
Nominal pumping speed N₂: 1,080 – 2,200 l/s



Diffusion Vacuum Pumps

> Rangu

Ultimate pressure: $< 7 \cdot 10^{-8}$ hPa (mbar)
Nominal pumping speed: 10,000 – 28,000 l/s



Vacuum Systems

> Tailored to Your Needs

